



P R E F O R M E D T H E R M O P L A S T I C P A V E M E N T M A R K I N G S

HotTape™

PRICE LIST

Effective January 1, 2012
Subject to change without notice.

Flint Trading, Inc.
Phone: (336) 475-6600
Fax: (336) 475-7900
sales@flintrtrading.com
www.flintrtrading.com

PRICE LIST

Prices valid from January 1, 2012



Please call us at (336) 475-6600 for more information about items not listed in this price catalog. Custom designs are also available in preformed thermoplastic. First-time applicators should contact Flint Trading for product support and free on-site training.

www.flintrading.com

HotTape™ is a "Preheat" type of material: Preheating of the road surface to a certain temperature is required

(Based on Section 9.3.7 of The Institute of Transportation Engineers (ITE) Traffic Control Devices Handbook)

* Skid Optics can be added without any extra cost; please state preference at time of order

HotTape™ Lines 90 MIL									
DESCRIPTION	Thickness	Size Imperial	Size Meters	Item Number	Unit Price/Ft.	Linear Ft. / Qty. Per Pack	Price Per Pack	Sq. Ft. Per Pack	Weight Per Pack
Lines White	90 mil	4" x 2'	.10 x .61	HT400003	\$ 1.64	96 ft / 29.26m	\$ 157.40	32 sq ft	33 lbs
Lines White	90 mil	4" x 3'	.10 x .91	HT400004	\$ 1.64	144 ft / 43.89m	\$ 236.20	48 sq ft	49 lbs
Lines Yellow	90 mil	4" x 3'	.10 x .91	HT400005	\$ 1.72	144 ft / 43.89m	\$ 247.70	48 sq ft	49 lbs
Lines Blue	90 mil	4" x 3'	.10 x .91	HT400006	\$ 1.72	144 ft / 43.89m	\$ 247.70	48 sq ft	49 lbs
Lines Red	90 mil	4" x 3'	.10 x .91	HT400007	\$ 1.80	144 ft / 43.89m	\$ 259.20	48 sq ft	49 lbs
Lines White	90 mil	5" x 3'	.12 x .91	HT894674	\$ 2.20	96 ft / 29.26m	\$ 211.20	40 sq ft	41 lbs
Lines Yellow	90 mil	5" x 3'	.12 x .91	HT894676	\$ 2.28	96 ft / 29.26m	\$ 218.90	40 sq ft	41 lbs
Lines White	90 mil	6" x 3'	.15 x .91	HT894686	\$ 2.48	96 ft / 29.26m	\$ 238.10	48 sq ft	49 lbs
Lines Yellow	90 mil	6" x 3'	.15 x .91	HT894688	\$ 2.57	96 ft / 29.26m	\$ 246.70	48 sq ft	49 lbs
Lines White	90 mil	8" x 3'	.20 x .91	HT894692	\$ 3.30	72 ft / 21.95m	\$ 237.60	48 sq ft	49 lbs
Lines Yellow	90 mil	8" x 3'	.20 x .91	HT894694	\$ 3.42	72 ft / 21.95m	\$ 246.20	48 sq ft	49 lbs
Lines White	90 mil	12" x 3'	.30 x .91	HT894700	\$ 4.93	48 ft / 14.63m	\$ 236.60	48 sq ft	49 lbs
Lines Yellow	90 mil	12" x 3'	.30 x .91	HT894702	\$ 5.13	48 ft / 14.63m	\$ 246.20	48 sq ft	49 lbs
Lines White	90 mil	16" x 3'	.40 x .91	HT894706	\$ 6.58	24 ft / 7.32m	\$ 157.90	32 sq ft	33 lbs
Lines Yellow	90 mil	16" x 3'	.40 x .91	HT894708	\$ 6.84	24 ft / 7.32m	\$ 164.20	32 sq ft	33 lbs
Lines White	90 mil	18" x 3'	.45 x .91	HT894712	\$ 7.41	24 ft / 7.32m	\$ 177.80	36 sq ft	37 lbs
Lines Yellow	90 mil	18" x 3'	.45 x .91	HT894714	\$ 7.69	24 ft / 7.32m	\$ 184.60	36 sq ft	37 lbs
Lines White	90 mil	24" x 3'	.61 x .91	HT894728	\$ 9.86	24 ft / 7.32m	\$ 236.60	48 sq ft	49 lbs
Lines Yellow	90 mil	24" x 3'	.61 x .91	HT894730	\$10.26	24 ft / 7.32m	\$ 246.20	48 sq ft	49 lbs

HotTape™ Rolls 90 MIL									
DESCRIPTION	Thickness	Size Imperial	Size Meters	Item Number	Unit Price/Ft.	Linear Ft. / Qty. Per Pack	Price Per Pack	Sq. Ft. Per Pack	Weight Per Pack
Rolls White	90 mil	4" x 30'	.10 x 9.14	HT895016	\$ 1.79	90 ft / 27.43m	\$ 161.10	30 sq ft	31 lbs
Rolls Yellow	90 mil	4" x 30'	.10 x 9.14	HT895018	\$ 1.88	90 ft / 27.43m	\$ 169.20	30 sq ft	31 lbs
Rolls Blue	90 mil	4" x 30'	.10 x 9.14	HT895012	\$ 1.88	90 ft / 27.43m	\$ 169.20	30 sq ft	31 lbs
Rolls Red	90 mil	4" x 30'	.10 x 9.14	HT895017	\$ 1.96	90 ft / 27.43m	\$ 176.40	30 sq ft	31 lbs
Rolls White	90 mil	5" x 30'	.12 x 9.14	HT895022	\$ 2.46	90 ft / 27.43m	\$ 221.40	37.5 sq ft	39 lbs
Rolls Yellow	90 mil	5" x 30'	.12 x 9.14	HT895024	\$ 2.55	90 ft / 27.43m	\$ 229.50	37.5 sq ft	39 lbs
Rolls White	90 mil	6" x 30'	.15 x 9.14	HT895032	\$ 2.71	90 ft / 27.43m	\$ 243.90	45 sq ft	46 lbs
Rolls Yellow	90 mil	6" x 30'	.15 x 9.14	HT895034	\$ 2.82	90 ft / 27.43m	\$ 253.80	45 sq ft	46 lbs
Rolls White	90 mil	8" x 30'	.20 x 9.14	HT895040	\$ 3.60	90 ft / 27.43m	\$ 324.00	60 sq ft	61 lbs
Rolls Yellow	90 mil	8" x 30'	.20 x 9.14	HT895042	\$ 3.74	90 ft / 27.43m	\$ 336.60	60 sq ft	61 lbs
Rolls White	90 mil	12" x 30'	.30 x 9.14	HT895052	\$ 5.41	60ft / 18.28m	\$ 324.60	60 sq ft	61 lbs
Rolls Yellow	90 mil	12" x 30'	.30 x 9.14	HT895054	\$ 5.63	60ft / 18.28m	\$ 337.80	60 sq ft	61 lbs
Rolls White	90 mil	16" x 30'	.40 x 9.14	HT895058	\$ 7.20	30ft / 9.14m	\$ 216.00	40 sq ft	41 lbs
Rolls Yellow	90 mil	16" x 30'	.40 x 9.14	HT895060	\$ 7.63	30ft / 9.14m	\$ 228.90	40 sq ft	41 lbs
Rolls White	90 mil	18" x 30'	.45 x 9.14	HT895066	\$ 8.10	30ft / 9.14m	\$ 243.00	45 sq ft	46 lbs
Rolls Yellow	90 mil	18" x 30'	.45 x 9.14	HT895068	\$ 8.44	30ft / 9.14m	\$ 253.20	45 sq ft	46 lbs
Rolls White	90 mil	24" x 30'	.60 x 9.14	HT895078	\$10.81	30ft / 9.14m	\$ 324.30	60 sq ft	61 lbs
Rolls Yellow	90 mil	24" x 30'	.60 x 9.14	HT895080	\$11.21	30ft / 9.14m	\$ 336.30	60 sq ft	61 lbs

HotTape™ Lines 125 MIL

DESCRIPTION	Thickness	Size Imperial	Size Meters	Item Number	Unit Price/Ft.	Linear Ft. / Qty. Per Pack	Price Per Pack	Sq. Ft. Per Pack	Weight Per Pack
Lines White	125 mil	4" x 3'	.10 x .61	HT894015	\$ 1.78	90 ft / 27.43m	\$ 160.20	30 sq ft	38 lbs
Lines White	125 mil	4" x 3'	.10 x .91	HT400008	\$ 1.78	90 ft / 27.43m	\$ 160.20	30 sq ft	40 lbs
Lines Yellow	125 mil	4" x 3'	.10 x .91	HT400009	\$ 1.87	90 ft / 27.43m	\$ 168.30	30 sq ft	40 lbs
Lines Blue	125 mil	4" x 3'	.10 x .91	HT400010	\$ 1.87	90 ft / 27.43m	\$ 168.30	30 sq ft	40 lbs
Lines Red	125 mil	4" x 3'	.10 x .91	HT400011	\$ 1.97	90 ft / 27.43m	\$ 177.30	30 sq ft	40 lbs
Lines White	125 mil	5" x 3'	.12 x .91	HT894019	\$ 2.37	60 ft / 18.28m	\$ 142.20	25 sq ft	30 lbs
Lines Yellow	125 mil	5" x 3'	.12 x .91	HT894018	\$ 2.47	60 ft / 18.28m	\$ 148.20	25 sq ft	36 lbs
Lines White	125 mil	6" x 3'	.15 x .91	HT894022	\$ 2.69	60 ft / 18.28m	\$ 161.40	30 sq ft	40 lbs
Lines Yellow	125 mil	6" x 3'	.15 x .91	HT894024	\$ 2.80	60 ft / 18.28m	\$ 168.00	30 sq ft	40 lbs
Lines White	125 mil	8" x 3'	.20 x .91	HT894026	\$ 3.57	45 ft / 13.72m	\$ 160.70	30 sq ft	40 lbs
Lines Yellow	125 mil	8" x 3'	.20 x .91	HT894028	\$ 3.70	45 ft / 13.72m	\$ 166.50	30 sq ft	40 lbs
Lines White	125 mil	12" x 3'	.30 x .91	HT894030	\$ 5.41	30 ft / 9.14m	\$ 162.30	30 sq ft	40 lbs
Lines Yellow	125 mil	12" x 3'	.30 x .91	HT894032	\$ 5.62	30 ft / 9.14m	\$ 168.60	30 sq ft	40 lbs
Lines White	125 mil	16" x 3'	.40 x .91	HT894034	\$ 7.18	15 ft / 4.57m	\$ 107.70	20 sq ft	29 lbs
Lines Yellow	125 mil	16" x 3'	.40 x .91	HT894036	\$ 7.45	15 ft / 4.57m	\$ 111.80	20 sq ft	29 lbs
Lines White	125 mil	18" x 3'	.45 x .91	HT894038	\$ 8.08	15 ft / 4.57m	\$ 121.20	22.5 sq ft	33 lbs
Lines Yellow	125 mil	18" x 3'	.45 x .91	HT894040	\$ 8.38	15 ft / 4.57m	\$ 125.70	22.5 sq ft	33 lbs
Lines White	125 mil	24" x 3'	.61 x .91	HT894044	\$10.78	15 ft / 4.57m	\$ 161.70	30 sq ft	40 lbs
Lines Yellow	125 mil	24" x 3'	.61 x .91	HT894046	\$11.19	15 ft / 4.57m	\$ 167.90	30 sq ft	40 lbs

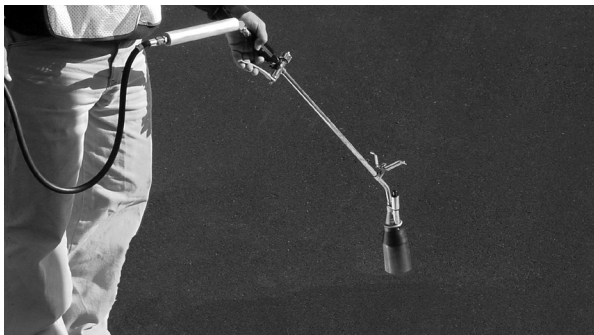
*** Skid Optics can be added without any extra cost; please state preference at time of order**

Skid Optics material provides increased skid resistance while maintaining nighttime visibility. Skid Optics can be added to any of the HotTape™ lines, legends, arrows, and other designs in 90-mil and 125-mil thicknesses. Flint Trading recommends using HotTape™ with Skid Optics in areas with pedestrian and cyclist traffic such as crosswalks, bike paths as well as parking facilities using HotTape™ for lines, legends, arrows, accessibility symbols, and word legends.

HotTape™ HotSpots Raised Marker Adhesive

DESCRIPTION	Thickness	Size Imperial	Size Meters	Item Number	Qty. Per Pack	Price Per Pack	Weight Per Pack
Black HotSpot	125 mil	5" x 5"	.12 x .12	HT894047	150	\$ 139.80	38 lbs
Yellow HotSpot	125 mil	5" x 5"	.12 x .12	HT894049	150	\$ 139.80	38 lbs
White HotSpot	125 mil	5" x 5"	.12 x .12	HT894051	150	\$ 139.80	38 lbs
Blue HotSpot	125 mil	5" x 5"	.12 x .12	HT894053	150	\$ 139.80	38 lbs
Black HotSpot	125 mil	8" x 8"	.20 x .20	HT894057	80	\$ 201.60	40 lbs

HotSpots are squares of HotTape™ ideal for adhering raised pavement markers. Application is the same as other HotTape™ markings; no sealers required. Apply marker to melted HotSpot square.



HotTape™ is a "Preheat" type of material:

Preheating of the road surface to a certain temperature is required

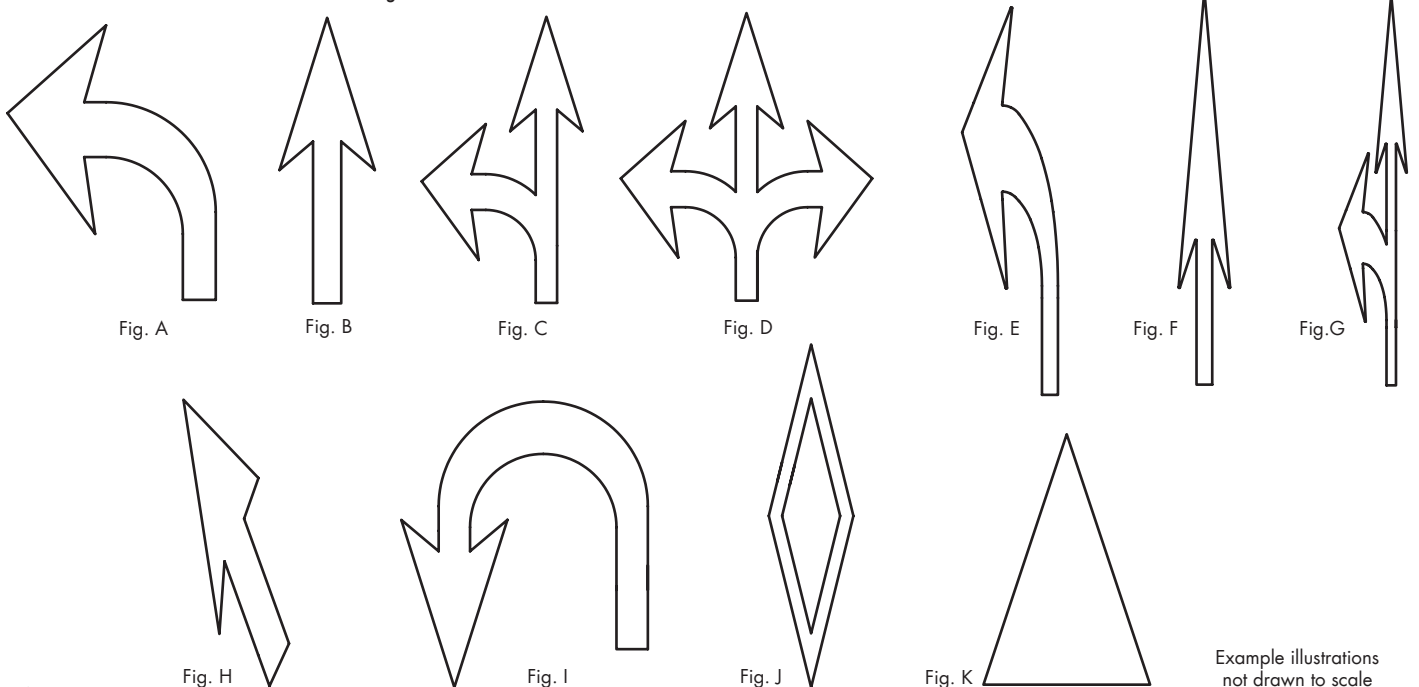
(Based on Section 9.3.7 of The Institute of Transportation Engineers (ITE) Traffic Control Devices Handbook)

See page 7 for information on application and pricing for the Magnum Heat Torch for proper application of HotTape.

HotTape™ Arrows and Symbols

HotTape™ Arrows and Symbols				90 MIL				125 MIL			
Fig	Description	Size Imperial (l x w)	Size Meters	Item Number	Qty Per Pack	Price Per Pack	Weight Per Pack	Item Number	Qty Per Pack	Price Per Pack	Weight Per Pack
A	Turn Arrow Standard Rev*	8' x 6'1"	2.44 x 1.85	HT894732	2	\$319.20	38 lbs	HT894048	2	\$337.60	53 lbs
A	Turn Arrow Standard Left	8' x 6'1"	2.44 x 1.85	HT894742	2	\$319.20	38 lbs	HT894058	2	\$337.60	53 lbs
A	Turn Arrow Standard Right	8' x 6'1"	2.44 x 1.85	HT894746	2	\$319.20	38 lbs	HT894062	2	\$337.60	53 lbs
A	Turn Arrow Rev*	4' x 3'	1.22 x .91	HT895120	5	\$373.10	24 lbs	HT894170	5	\$391.70	33 lbs
A	Turn Arrow Left	4' x 3'	1.22 x .91	HT895122	5	\$373.10	24 lbs	HT894172	5	\$391.70	33 lbs
A	Turn Arrow Right	4' x 3'	1.22 x .91	HT895124	5	\$373.10	24 lbs	HT894174	5	\$391.70	33 lbs
B	Straight Arrow Standard	9'6" x 3'3"	2.90 x .99	HT894898	2	\$281.10	28 lbs	HT894164	2	\$290.90	39 lbs
B	Straight Arrow	6' x 2'	1.83 x .61	HT895284	5	\$302.20	25 lbs	HT894178	5	\$319.20	35 lbs
C	Combi Arrow Standard Rev*	12'9" x 7'2"	3.88 x 2.18	HT894750	1	\$290.70	32 lbs	HT894066	1	\$305.10	44.5 lbs
C	Combi Arrow Standard Left	12'9" x 7'2"	3.88 x 2.18	HT894748	1	\$290.70	32 lbs	HT894064	1	\$305.10	44.5 lbs
C	Combi Arrow Standard Right	12'9" x 7'2"	3.88 x 2.18	HT894752	1	\$290.70	32 lbs	HT894068	1	\$305.10	44.5 lbs
C	6' Combi Arrow Rev*	6' x 3'10"	1.82 x 1.17	HT895280	2	\$241.60	21 lbs	HT894176	2	\$252.50	29 lbs
D	13' Double Combi Arrow	13'2" x 11'2"	4.01 x 3.40	HT894755	1	\$451.70	46 lbs	HT894072	1	\$465.20	64 lbs
E	Turn Arrow Elongated Rev*	12' x 3'	3.66 x .91	HT894771	2	\$319.20	30 lbs	HT894083	2	\$337.80	42 lbs
E	Turn Arrow Elongated Left	12' x 3'	3.66 x .91	HT894740	2	\$319.20	30 lbs	HT894056	2	\$337.80	42 lbs
E	Turn Arrow Elongated Right	12' x 3'	3.66 x .91	HT894744	2	\$319.20	30 lbs	HT894060	2	\$337.80	42 lbs
F	Straight Arrow Elongated	12' x 1'8"	3.66 x .51	HT894896	2	\$281.10	22 lbs	HT894162	2	\$290.90	31 lbs
G	Combi Arrow Elongated Rev*	20' x 3'7"	6 x 1.09	HT894776	1	\$290.70	27 lbs	HT894088	1	\$297.30	37.5 lbs
G	Combi Arrow Elongated Left	20' x 3'7"	6 x 1.09	HT894772	1	\$290.70	27 lbs	HT894084	1	\$297.30	37.5 lbs
G	Combi Arrow Elongated Right	20' x 3'7"	6 x 1.09	HT894774	1	\$290.70	27 lbs	HT894086	1	\$297.30	37.5 lbs
H	Lane Drop Arrow Rev*	18' x 5'6"	5.49 x 1.68	HT894766	1	\$417.50	51 lbs	HT894082	1	\$435.20	68 lbs
H	Lane Drop Arrow Left	18' x 5'6"	5.49 x 1.68	HT894762	1	\$417.50	51 lbs	HT894078	1	\$435.20	68 lbs
H	Lane Drop Arrow Right	18' x 5'6"	5.49 x 1.68	HT894764	1	\$417.50	51 lbs	HT894080	1	\$435.20	68 lbs
I	U-Turn Arrow Left	10' x 7'6"	3.05 x 2.29	HT894754	1	\$290.70	29 lbs	HT894070	1	\$305.10	40 lbs
J	HOV Diamond Des. Lane	13'1" x 3'3"	3.99 x .99	HT894756	5	\$373.10	68 lbs	HT894074	5	\$391.70	72 lbs
K	Shark's Teeth Yield Markings	12" x 18"	.3 x .45	HT896288	10	\$106.50	9 lbs	HT896289	10	\$111.90	12 lbs
K	Shark's Teeth Yield Markings	16" x 24"	.41 x .61	HT896288x	10	\$177.40	17.5 lbs	HT896289x	10	\$185.60	24 lbs
K	Shark's Teeth Yield Markings	24" x 36"	.61 x .91	HT896290	6	\$121.90	15 lbs	HT896291	6	\$126.10	18 lbs

* Reversible items do not have surface glass beads.



Example illustrations not drawn to scale

HotTape™ Word Legends			90 MIL				125 MIL			
DESCRIPTION	Size Imperial* Letter Height	Size Meters Letter Height	Item Number	Qty Per Pack	Price Per Pack	Weight Per Pack	Item Number	Qty Per Pack	Price Per Pack	Weight Per Pack
AHEAD	8 ft.	2.44	HT894794	1	\$289.20	30 lbs	HT894104	1	\$335.00	41 lbs
BUMP	8 ft.	2.44	HT894800	1	\$235.50	27 lbs	HT894108	1	\$248.40	37 lbs
BUS	8 ft.	2.44	HT894802	1	\$187.10	20 lbs	HT894110	1	\$198.00	28 lbs
CLEAR	8 ft.	2.44	HT894806	1	\$264.80	28 lbs	HT894112	1	\$278.50	38 lbs
EXIT	8 ft.	2.44	HT894810	1	\$221.20	18 lbs	HT894114	1	\$231.30	25 lbs
FIRE	8 ft.	2.44	HT894814	1	\$221.20	21 lbs	HT894116	1	\$231.30	29 lbs
KEEP	8 ft.	2.44	HT894822	1	\$239.80	24 lbs	HT894120	1	\$252.60	33 lbs
LANE	8 ft.	2.44	HT894826	1	\$229.80	22 lbs	HT894122	1	\$244.80	30 lbs
LEFT	8 ft.	2.44	HT894830	1	\$229.80	19 lbs	HT894124	1	\$236.50	27 lbs
MERGE	8 ft.	2.44	HT894834	1	\$327.80	32 lbs	HT894126	1	\$343.40	45 lbs
MPH	8 ft.	2.44	HT894838	1	\$187.20	19 lbs	HT894128	1	\$198.50	27 lbs
ONLY	8 ft.	2.44	HT894844	1	\$237.40	21 lbs	HT894132	1	\$241.50	29 lbs
ONLY (YELLOW)	8 ft.	2.44	HT894844Y	1	\$237.40	21 lbs	HT894132Y	1	\$251.00	29 lbs
ONLY	10 ft.	3.05	HT894845	1	\$273.80	33 lbs	HT894133	1	\$290.90	46 lbs
ONLY (YELLOW)	10 ft.	3.05	HT894845Y	1	\$284.30	33 lbs	HT894133Y	1	\$302.10	46 lbs
PED	8 ft.	2.44	HT894848	1	\$187.10	19 lbs	HT894134	1	\$198.60	26 lbs
RIGHT	8 ft.	2.44	HT894852	1	\$249.60	26 lbs	HT894136	1	\$261.00	36 lbs
R	6 ft.	1.82	HT894856	4	\$259.80	16 lbs	HT894138	4	\$274.00	22 lbs
METRIC R	6.5 ft.	2.00	HT894892	4	\$265.60	18 lbs	HT894158	4	\$274.00	25 lbs
RXR FHWA KIT	see note below		HTK894858	1	\$432.70	65 lbs	HTK894140	1	\$454.10	90 lbs
RXR METRIC KIT	see note below		HTK894891	1	\$432.70	65 lbs	HTK894160	1	\$454.10	90 lbs
SCHOOL	8 ft.	2.44	HT894900	1	\$356.10	34 lbs	HT894166	1	\$373.10	47 lbs
SCHOOL (YELLOW)	8 ft.	2.44	HT894900Y	1	\$369.70	34 lbs	HT894166Y	1	\$387.50	47 lbs
SCHOOL	10 ft.	3.05	HT894904	1	\$465.50	62 lbs	HT894168	1	\$482.50	70 lbs
SCHOOL (YELLOW)	10 ft.	3.05	HT894904Y	1	\$483.00	62 lbs	HT894168Y	1	\$500.50	70 lbs
SIGNAL	8 ft.	2.44	HT894860	1	\$318.00	24 lbs	HT894142	1	\$333.40	33 lbs
SLOW	8 ft.	2.44	HT894864	1	\$228.40	24 lbs	HT894144	1	\$241.50	33 lbs
SLOW (YELLOW)	8 ft.	2.44	HT894864Y	1	\$237.20	24 lbs	HT894144Y	1	\$250.80	33 lbs
STOP	8 ft.	2.44	HT894868	1	\$228.40	23 lbs	HT894146	1	\$241.50	32 lbs
THRU	8 ft.	2.44	HT894872	1	\$235.50	23 lbs	HT894148	1	\$246.90	32 lbs
TURN	8 ft.	2.44	HT894876	1	\$235.50	23 lbs	HT894150	1	\$246.90	32 lbs
X-ING	8 ft.	2.44	HT894884	1	\$231.30	20 lbs	HT894154	1	\$244.00	28 lbs
X-ING (YELLOW)	8 ft.	2.44	HT894884Y	1	\$240.10	20 lbs	HT400012	1	\$265.10	28 lbs
YIELD	8 ft.	2.44	HT894888	1	\$249.60	23 lbs	HT894156	1	\$261.00	32 lbs

Note: RxR contains 2 R's and 42' of 3' x 16" flat segments for the X. *The above dimensions are nominal sizes; package insert includes actual dimensions and letter spacing.

AHEAD

ONLY

SCHOOL

STOP

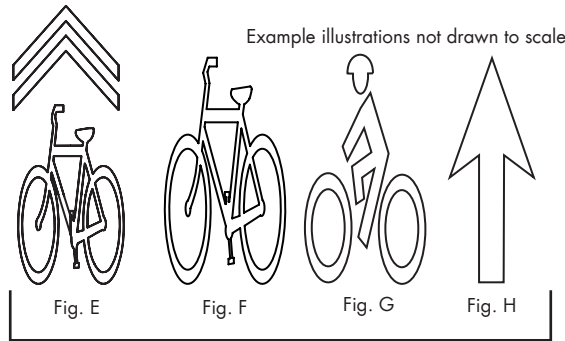
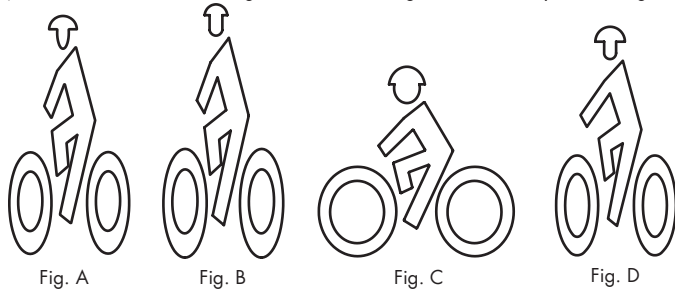


HotTape™ Bike Lane Symbols

90 MIL

Fig	DESCRIPTION	Size Imperial (l x w)	Size Meters (l x w)	Item Number	Qty Per Pack	Price Per Pack	Weight Per Pack	Remarks
A	Bicycle Designated Lane	4' x 2'	1.22 x .61	HT894734 (+)	5	\$508.80	16 lbs	
B	Bicycle Designated Lane	8' x 4'	2.44 x 1.22	HT894736 (+)	2	\$350.80	25 lbs	
C	Bicycle Designated Trail	4' x 3'3"	1.22 x .99	HT894738 (+)	5	\$519.90	25 lbs	
D	Bicycle Designated Lane	6' x 3'	.91 x 1.82	HT894735 (+)	5	\$739.90	30 lbs	FHWA Standard 2004 SHS Book
E	Shared Lane Symbol	9'4" x 3'4"	2.82 x .99	HT400146 (+)	2	\$392.20	35 lbs	FHWA Standard 2009 MUTCD
F	Bicycle Symbol	6' x 3'4"	1.8 x 1	HT400182	5	\$805.10	35 lbs	FHWA Standard 2009 MUTCD
G	Helmeted Bicyclist	6' x 3'4"	1.8 x 1	HT400181	5	\$739.90	35 lbs	FHWA Standard 2009 MUTCD
H	Bike Lane Straight Arrow	6' x 2'	1.8 x .61	HT400180	2	\$126.60	24 lbs	FHWA Standard 2009 MUTCD
	BIKE	4' x 2'6"	1.22 x .76	HT895116	4	\$639.30	25 lbs	
	LANE	4' x 3'1"	1.22 x .94	HT895118	4	\$639.30	25 lbs	
	ONLY	4' x 2'10"	1.22 x .86	HT895117	4	\$653.00	25 lbs	

(+) add "L" for Left or "R" for Right to indicate facing direction of bicycle marking



BIKE
LANE
ONLY

As shown in 2009 MUTCD

HotTape™ INDIVIDUAL LETTERS/NUMBERS

90 MIL

125 MIL

Fig	DESCRIPTION	Size Imperial	Size Meters	Item Number	Qty Per Pack	Price Per Pack	Item Number	Qty Per Pack	Price Per Pack
A	LETTERS A THRU Z	4 in.	10.16 cm	HT8954 -"L"	1	\$ 7.10	HT8944 -"L"	1	\$ 7.50
A	LETTERS A THRU Z	6 in.	15.24 cm	HT8956 -"L"	1	\$ 8.90	HT8946 -"L"	1	\$ 9.40
A	LETTERS A THRU Z	12 in.	30.48 cm	HT89512 -"L"	1	\$12.80	HT89412 -"L"	1	\$13.40
B	LETTERS A THRU Z	4 ft.	1.22	HT89548 -"L"	1	\$50.90	HT89448 -"L"	1	\$54.30
B	LETTERS A THRU Z	8 ft.	2.44	HT89596 -"L"	1	\$64.90	HT89496 -"L"	1	\$68.40
A	NUMBERS 0 THRU 9	4 in.	10.16 cm	HT8954 -"#"	1	\$ 7.10	HT8944 -"#"	1	\$ 7.50
A	NUMBERS 0 THRU 9	6 in.	15.24 cm	HT8956 -"#"	1	\$ 8.90	HT8946 -"#"	1	\$ 9.40
A	NUMBERS 0 THRU 9	12 in.	30.48 cm	HT89512 -"#"	1	\$12.80	HT89412 -"#"	1	\$13.40
B	NUMBERS 0 THRU 9	4 ft.	1.22	HT89548 -"#"	1	\$50.90	HT89448 -"#"	1	\$54.30
B	NUMBERS 0 THRU 9	8 ft.	2.44	HT89596 -"#"	1	\$64.90	HT89496 -"#"	1	\$68.40

Fig. A - FHWA SERIES B



Fig. B - FHWA/Complies with MUTCD



Example illustrations not drawn to scale

Application Equipment / Accessories

DESCRIPTION	Item Number	List Price
Magnum Heat Torch	HT897130	\$ 586.50
Magnum Tank Trolley (cylinder not included)	530108	\$ 173.00
Infrared Thermometer	HMT5	\$ 140.80
Spare Parts for Magnum Heat Torch:		
Magnum Regulator	HT187923	\$ 85.70
Magnum Torch Tip	HT187924	\$ 17.30
Magnum Torch Piezo Lighter	HT198925	\$ 61.20
Magnum Torch 1/4" Male/Female Adapter	HT187928	\$ 7.20
Magnum Torch Hose	HT187929	\$ 87.70
LPG Tank - 20 lbs.	HT530105	\$ 53.50
LPG Tank - 40 lbs.	HT530107	\$ 101.00

First-time applicators should contact Flint Trading, Inc. at (336) 475-6600 for product support and free on-site training.

SIMPLE INSTALLATION

Installing HotTape™ is fast, safe and cost-effective with an industrial propane heat torch such as the Magnum Heat Torch. Preheating the pavement to a certain temperature is required prior to application.

HIGH SKID RESISTANT FOR SAFETY

Specially made for crosswalks, bike paths, and other pedestrian uses, Skid Optics is a unique feature of HotTape™ that ensures skid resistance is maximized.

VISIBILITY

HotTape™ is pre-beaded and incorporates intermixed glass beads which provide both high initial and excellent long term retroreflectivity. HotTape™ is formulated with the highest quality color pigments resulting in vibrant colors offering superior daytime visibility.

ENHANCED DURABILITY

HotTape™ is extremely durable and provides excellent long term performance in critical ADT areas requiring transverse markings.

IMPERVIOUS TO OIL AND GAS

HotTape™ is oil and gas impervious, yet compatible with all asphalt surfaces. HotTape™ can be applied on fresh asphalt as soon as the road surface sets.

WORKER AND ENVIRONMENTAL SAFETY

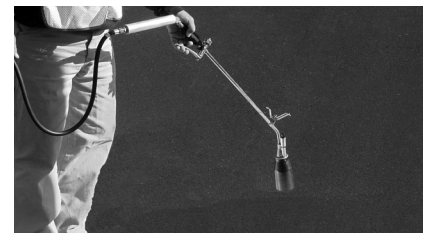
With no lead chromate, heavy metal compounds or VOCs, HotTape™ is non-hazardous based on current EPA and OSHA standards either during application or removal.

MANUFACTURING CONTROL

All HotTape™ preformed thermoplastic materials are made at Flint's manufacturing facility which is ISO 9001:2008 certified for design, development and manufacturing.



No. 897130
HotTape™ Magnum Torch
(Includes 30' hose)



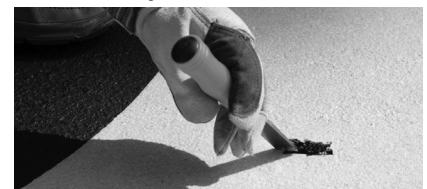
Clean the surface to remove any debris. Preheat the pavement surface to a minimum of 300° F.



Unroll or lay out the flat sheets of material as desired for particular marking.



Heat HotTape™ with a propane heat torch such as the Magnum Heat Torch.



Chisel test to ensure proper bond.

Terms and Conditions of Sale

Price:

Prices are subject to change without notice. Prices charged will be those in effect at the time of the acceptance of the order.

Acceptance:

All orders are subject to acceptance by an officer of Flint Trading, Inc.

Taxes:

The price of the products specified herein excludes any federal, state or local taxes. The Buyer is responsible for any federal, state, or local taxes that apply. The Buyer agrees to reimburse the Seller for any taxes he might ultimately be obligated to pay as a result of this sale which normally would have been collected at the time of sale.

Payment:

Seller's prices are calculated on a cash-with-order basis. Therefore, all orders are COD unless credit is already established by an acknowledged credit application. Terms on established credit accounts are net on presentation. Balances unpaid after 30 days from date of invoice are subject to a service charge of 1.5% per month or maximum allowed by law, if different, together with expenses incidental to collection, including specifically set forth reasonable attorney's fee of 20% of the unpaid balance.

Product Changes:

Flint Trading, Inc. is constantly working to improve products. Therefore, in order to incorporate new technological advances, we reserve the right to alter chemical nature, specification, design or weight. Flint Trading, Inc. shall not be required to modify goods already sold or in service.

Freight Policy:

All product is shipped FOB our warehouse in Thomasville, NC unless otherwise stipulated.

Claims for Damage or Shortages:

Any claims for shortages must be made within 10 days after the receipt of the merchandise. All products are shipped from our warehouse in Thomasville, NC in good condition and packaged securely. Any shipment which arrives with visible signs of damage or missing packaging should be refused or thoroughly inspected with damage noted on the carrier's delivery ticket. Any claims for goods damaged (visible or concealed) must be made by the Buyer to the delivering carrier within 10 days after receipt of the merchandise.

Restocking Charges:

No merchandise may be returned for credit without the Seller's prior approval and a Return Merchandise Authorization number, and only with the transportation charges prepaid. A 15% (fifteen percent) restocking charge will be deducted from any credit issued. Returned merchandise will not be accepted after 90 days from the date of delivery.

Skid Optics:

Skid Optics is a unique feature that can be added to HofTape™ and is designed to enhance skid resistance and retroreflectivity especially where loss of traction in wet conditions is of major concern. Skid Optics can be added to any of the HofTape™ lines, legends, arrows, and other designs in 90-mil and 125-mil thicknesses.

Flint Trading offers HofTape™ with Skid Optics for enhanced skid/slip resistance for road markings for areas with pedestrian and cyclist traffic such as crosswalks, bike paths, as well as parking facilities and other areas using preformed thermoplastic for lines, arrows, accessibility symbols, and word legends.

Warranties:

Flint Trading, Inc. warrants HofTape™ preformed thermoplastic pavement marking products, unless otherwise specified, to the original buyer against material defects for a period of one year from the

date of delivery of the goods. Where it appears to the Seller's satisfaction that the defect was present at the time of delivery of the goods, Seller's sole obligation under this warranty is, at its option, to repair the defective product or to provide replacement material. This warranty does not apply to items that have been altered or subjected to misuse or negligence.

Should a product prove to be defective or unsuitable in any way, it is understood that the Seller's limit of liability for all damages, including but not limited to, direct, incidental or consequential injury, loss or damage arising out of the use of or the inability to use the product, shall be to repair the defective product or to provide an equivalent quantity of replacement product.

Important Notice:

Before using any product from the Manufacturer and Seller, the Buyer shall determine the suitability of the product for his or her intended use and the Buyer assumes all risk and liability whatsoever in connection therewith.

The following excerpts are reprinted from the 2009 Edition of the Manual on Uniform Traffic Control Devices (MUTCD), Chapter 1A.General. To view and access the MUTCD in its entirety, visit <http://mutcd.fhwa.dot.gov/index.htm>.

Section 1A.02 Principles of Traffic Control Devices

Support:

This Manual contains the basic principles that govern the design and use of traffic control devices for all streets, highways, bikeways, and private roads open to public travel (see definition in Section 1A.13) regardless of type or class or the public agency, official, or owner having jurisdiction. This Manual's text specifies the restriction on the use of a device if it is intended for limited application or for a specific system. It is important that these principles be given primary consideration in the selection and application of each device.

Section 1A.07 Responsibility for Traffic Control Devices

Standard:

The responsibility for the design, placement, operation, maintenance, and uniformity of traffic control devices shall rest with the public agency or the official having jurisdiction, or, in the case of private roads open to public travel, with the private owner or private official having jurisdiction. 23 CFR 655.603 adopts the MUTCD as the national standard for all traffic control devices installed on any street, highway, bikeway, or private road open to public travel (see definition in Section 1A.13). When a State or other Federal agency manual or supplement is required, that manual or supplement shall be in substantial conformance with the National MUTCD.

02 23 CFR 655.603 also states that traffic control devices on all streets, highways, bikeways, and private roads open to public travel in each State shall be in substantial conformance with standards issued or endorsed by the Federal Highway Administrator.

Section 1A.10 Interpretations, Experimentations, Changes, and Interim Approvals

Standard:

01 Design, application, and placement of traffic control devices other than those adopted in this Manual shall be prohibited unless the provisions of this Section are followed. Support:

02 Continuing advances in technology will produce changes in the highway, vehicle, and road user proficiency; therefore, portions of the system of traffic control devices in this Manual will require updating. In addition, unique situations often arise for device applications that might require interpretation or clarification of this Manual. It is important to have a procedure for recognizing these developments and for introducing new ideas and modifications into the system.

Standard:

03 Except as provided in Paragraph 4, requests for any interpretation, permission to experiment, interim approval, or change shall be submitted electronically to the Federal Highway Administration (FHWA), Office of Transportation Operations, MUTCD team, at the following e-mail address: MUTCDofficialrequest@dot.gov.

Flint
TRADING INC.®

115 Todd Court Thomasville, NC 27360
Phone: 336-475-6600 Fax: 336-475-7900

Website: www.flintrading.com
Email: sales@flintrading.com