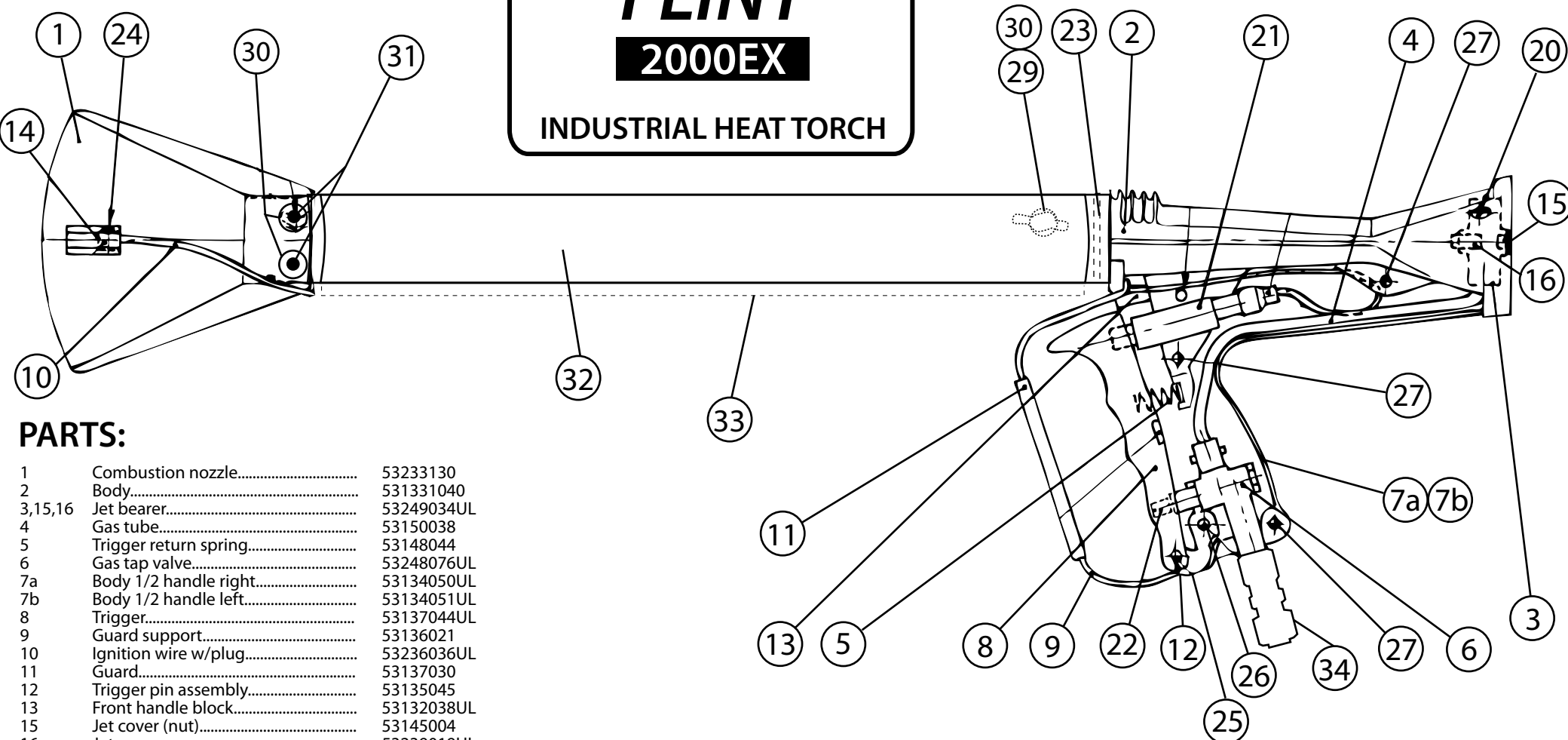


FLINT 2000EX

INDUSTRIAL HEAT TORCH



PARTS:

1	Combustion nozzle.....	53233130
2	Body.....	531331040
3,15,16	Jet bearer.....	53249034UL
4	Gas tube.....	53150038
5	Trigger return spring.....	53148044
6	Gas tap valve.....	53248076UL
7a	Body 1/2 handle right.....	53134050UL
7b	Body 1/2 handle left.....	53134051UL
8	Trigger.....	53137044UL
9	Guard support.....	53136021
10	Ignition wire w/plug.....	53236036UL
11	Guard.....	53137030
12	Trigger pin assembly.....	53135045
13	Front handle block.....	53132038UL
15	Jet cover (nut).....	53145004
16	Jet.....	53239019UL
20	Screw M4x10.....	53CBM4X10
21	Igniter.....	53131003
22	Tap adjustment screw.....	53M8X8ST
23	Comb. O-Ring 36.5 mr.....	53140033UL
24	Set screw.....	53CM3X4
25	Pin screw.....	53CHCM4X30
26	Trigger screw.....	53CHCM4X25
27	Handle screw.....	53CHCM4X16
29	Wing screw (located on other side).....	53CHCM5X10
30	Flex washer.....	53148038
31	Screw.....	53CHCM5X8
32	Extension, complete.....	53235035UL
33	Shrink sleeve, extension.....	53137023
34	Swivel connector.....	53148043

Not shown	Hose with collar&conn.	53250072
Not shown	Adj. pressure regulator.....	53134046UL
Not shown	Shrink sleeve, wire.....	53236017
Not shown	Male to male connector (conn. 2 hoses).....	53113005

ACCESSORIES:

Flint 2000EX Trolley.....	530108
CD-450 Cylinder Dolly.....	530109
C-20 LPG Cylinder.....	530105
C-30 LPG Cylinder.....	530106
C-40 LPG Cylinder.....	530107
C-100 LPG Cylinder.....	530115

FLINT TRADING, INC.

P.O. BOX 160, THOMASVILLE, NC 27361
 PHONE: (336) 475-6600 FAX: (336) 475-7900
 E-MAIL: sales@flintrtrading.com
 www.flintrtrading.com

Questions or Comments?

Call us today and place an order for the **FLINT 2000EX!**
PROFESSIONAL INDUSTRIAL HEAT TORCH!