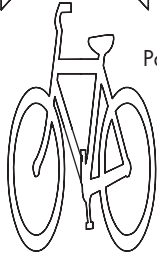


Page 5



Page 5



Page 2



Page 7

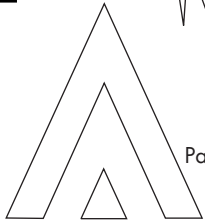


Page 6

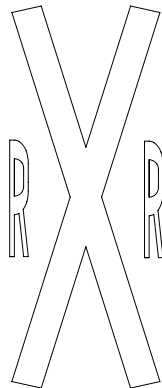


Page 4

Page 5



Page 2



Page 3

# PreMark®

BY FLINT

## PREFORMED THERMOPLASTIC PAVEMENT MARKINGS

# PRICE LIST

Effective January 1, 2012

Subject to change without notice.

Flint Trading, Inc.

Phone: (336) 475-6600

Fax: (336) 475-7900

sales@flintrading.com

www.flintrading.com

# PRICE LIST

Prices valid from January 1, 2012

Visit [www.flintrading.com](http://www.flintrading.com) to view the photo gallery

Other designs and colors of lines, legends, arrows, and markings are available.  
Please call us at (336) 475-6600 for more information about items not listed in this price catalog.



First-time applicators should contact Flint Trading for product support and free on-site training.

**PreMark® is a "No Preheat" type of material:** No preheating of the road surface to a given temperature is required

(Based on Section 9.3.7 of The Institute of Transportation Engineers (ITE) *Traffic Control Devices Handbook*)

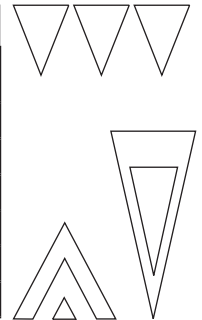
PreMark® Lines									125 MIL
DESCRIPTION	Size Imperial	Size Meters	Item Number	Unit Price/Ft.	Linear Ft. / Qty. Per Pack	Price Per Pack	Sq. Ft. Per Pack	Weight Per Pack	Remarks
Lines Black	2" x 3'	.05 x .91	89434080BKHS	\$ 1.00	120ft /36.59m	<b>\$120.00</b>	20 sq ft	26 lbs	Stair Strips
Lines White	4" x 3'	.10 x .91	PM600100	\$ 1.80	90ft /27.43m	<b>\$162.00</b>	30 sq ft	38 lbs	
Lines Yellow	4" x 3'	.10 x .91	PM600101	\$ 1.91	90ft /27.43m	<b>\$171.90</b>	30 sq ft	38 lbs	
Lines Blue	4" x 3'	.10 x .91	PM600107	\$ 1.91	90ft /27.43m	<b>\$171.90</b>	30 sq ft	38 lbs	
Lines Red	4" x 3'	.10 x .91	PM600108	\$ 2.08	90ft /27.43m	<b>\$187.20</b>	30 sq ft	38 lbs	
Lines Orange	4" x 3'	.10 x .91	PM600109	\$ 2.08	90ft /27.43m	<b>\$187.20</b>	30 sq ft	38 lbs	
Lines White	4" x 2'	.10 x .61	8433070	\$ 1.80	60ft /18.28m	<b>\$108.00</b>	20 sq ft	25 lbs	Mini Skips
Lines White	5" x 3'	.12 x .91	8432072	\$ 2.39	60ft /18.28m	<b>\$143.40</b>	25 sq ft	30 lbs	
Lines White	6" x 3'	.15 x .91	8432061	\$ 2.70	60ft /18.28m	<b>\$162.00</b>	30 sq ft	38 lbs	
Lines Yellow	6" x 3'	.15 x .91	8432061Y	\$ 2.83	60ft /18.28m	<b>\$169.80</b>	30 sq ft	38 lbs	
Lines White	8" x 3'	.20 x .91	PM600102	\$ 3.59	45ft /13.72m	<b>\$161.60</b>	30 sq ft	38 lbs	
Lines Yellow	8" x 3'	.20 x .91	PM600103	\$ 3.85	45ft /13.72m	<b>\$173.30</b>	30 sq ft	38 lbs	
Lines White	8" x 2'	.20 x .61	8433062	\$ 3.60	60ft /18.28m	<b>\$216.00</b>	40 sq ft	48 lbs	Mini Skips
Lines White	12" x 3'	.30 x .91	8431064	\$ 5.41	30ft /9.14m	<b>\$162.30</b>	30 sq ft	38 lbs	
Lines Yellow	12" x 3'	.30 x .91	8431064Y	\$ 5.65	30ft /9.14m	<b>\$169.50</b>	30 sq ft	38 lbs	
Lines White	16" x 3'	.40 x .91	8431065	\$ 7.21	30ft /9.14m	<b>\$216.30</b>	40 sq ft	50 lbs	
Lines White	18" x 3'	.45 x .91	8431067	\$ 8.11	30ft /9.14m	<b>\$243.30</b>	45 sq ft	55 lbs	
Lines White	24" x 3'	.61 x .91	8430566	\$10.81	15ft /4.57m	<b>\$162.20</b>	30 sq ft	38 lbs	
Lines Yellow	24" x 3'	.61 x .91	8430566Y	\$11.30	15ft /4.57m	<b>\$169.50</b>	30 sq ft	38 lbs	

Non-beaded linear material is available.

## ViziGrip® can be added without any extra cost; please state preference at time of order

ViziGrip® is a unique feature of PreMark® designed to ensure that skid resistance and retroreflectivity are maximized especially where loss of traction in wet conditions is of major concern. ViziGrip® can be added to any of the PreMark® lines, legends, arrows, and other designs in 90-mil and 125-mil thicknesses. For enhanced skid/slip resistance, Flint Trading recommends using PreMark® with ViziGrip® in areas with pedestrian and cyclist traffic such as crosswalks, bike paths as well as parking facilities using PreMark® for lines, legends, arrows, accessibility symbols, and word legends.

PreMark® Yield Markings/Hump Markings							125 MIL
DESCRIPTION	Size Imperial	Size Meters	Item Number	Qty. Per Pack	Price Per Pack	Weight Per Pack	Remarks
Yield Line (Shark's Teeth)	12" x 18"	.30 x .46	8232503	25	<b>\$272.80</b>	27 lbs	FHWA Standard
Yield Line (Shark's Teeth)	16" x 24"	.40 x .61	8231006	10	<b>\$181.20</b>	24 lbs	FHWA Standard
Yield Line (Shark's Teeth)	24" x 36"	.61 x .91	8231002	10	<b>\$207.80</b>	30 lbs	FHWA Standard
Yield Ahead Triangle	6' x 13'	1.8 x 4.0	8230112HS	1	<b>\$211.50</b>	35 lbs	FHWA Standard
Yield Ahead Triangle	6' x 20'	1.8 x 6.1	8230111HS	1	<b>\$296.50</b>	42 lbs	FHWA Standard
Speed Hump Marking	6' x 6'	1.8	8230126HS	2	<b>\$148.90</b>	16 lbs	FHWA Standard



PreMark® Handicap Markings with ViziGrip®							90 MIL
DESCRIPTION	Size Imperial	Size Meters	Item Number	Quantity Per Pack	Price Per Pack	Weight Per Pack	Remarks
Handicap Symbol White	28"	0.71	89230536HS	5	<b>\$266.00</b>	25 lbs	FHWA/ADA
Handicap Symbol Blue	28"	0.71	89230536BHS	5	<b>\$266.00</b>	25 lbs	FHWA/ADA
Handicap Kit White on Blue	40" x 40"	1.01 x 1.01	89230237HS	2	<b>\$250.80</b>	30 lbs	FHWA/ADA
Handicap Kit White on Blue	45" x 45"	1.1 x 1.1	89230232HS	2	<b>\$305.50</b>	35 lbs	Caltrans (Calif.)
Handicap Kit White on Blue	48" x 48"	1.25 x 1.25	89230230HS	2	<b>\$320.90</b>	39 lbs	
Lines Blue	4" x 3'	.10 x .91	PM600200	90 linear ft	<b>\$166.50</b>	32 lbs	



Handicap Symbol 28"

Handicap Kit 40" x 40"

PreMark® Legends							125 MIL
DESCRIPTION	Letter Height	Letter H. (metric)	Item Number	Quantity Per Pack	Price Per Pack	Weight Per Pack	Remarks
"AHEAD"	8 ft.	2.5	8130106	1	\$336.00	41 lbs	FHWA Standard
"BUMP"	8 ft.	2.5	8130145	1	\$247.80	34 lbs	FHWA Standard
"BUS"	8 ft.	2.5	8130117	1	\$199.50	30 lbs	FHWA Standard
"CLEAR"	8 ft.	2.5	8130129	1	\$280.90	41 lbs	FHWA Standard
"EAST"	8 ft.	2.5	81301062	1	\$240.00	34 lbs	FHWA Standard
"EXIT"	8 ft.	2.5	8130120	1	\$240.00	34 lbs	FHWA Standard
"KEEP"	8 ft.	2.5	8130128	1	\$266.30	34 lbs	FHWA Standard
"LANE"	8 ft.	2.5	8130113	1	\$249.10	34 lbs	FHWA Standard
"LEFT"	8 ft.	2.5	8130109	1	\$240.00	34 lbs	FHWA Standard
"MERGE"	8 ft.	2.5	8130116	1	\$344.50	41 lbs	FHWA Standard
"MPH"	8 ft.	2.5	8130115	1	\$199.50	30 lbs	FHWA Standard
"NORTH"	8 ft.	2.5	81301012	1	\$329.70	41 lbs	FHWA Standard
"ONLY"	8 ft.	2.5	8130102	1	\$242.00	34 lbs	FHWA Standard
"PED"	8 ft.	2.5	8130114	1	\$199.50	30 lbs	FHWA Standard
"RIGHT"	8 ft.	2.5	8130108	1	\$262.80	41 lbs	FHWA Standard
"R X R" Kit FHWA	20' x 8'	6 x 2.5	PMK8130103A	1	\$463.40	79 lbs	FHWA Standard
"R"	6'6"	2	8130203	2	\$139.10	17 lbs	Narrow
"R X R" Kit Narrow	20' x 6'6"	6 x 1.98	PMK8130103A-SP1	1	\$463.40	75 lbs	FHWA Standard
"SIGNAL"	8 ft.	2.5	8130105	1	\$336.00	45 lbs	FHWA Standard
"SCHOOL"	10 ft.	3	8120100	1	\$485.30	65 lbs	FHWA Standard
"SCHOOL"	8 ft.	2.5	8110101	1	\$376.70	52 lbs	FHWA Standard
"SCHOOL" YELLOW	8 ft.	2.5	8110101Y	1	\$391.40	52 lbs	CALTRANS
"SLOW"	8 ft.	2.5	8130110	1	\$240.00	34 lbs	FHWA Standard
"SLOW" YELLOW	8 ft.	2.5	8130110Y	1	\$251.40	34 lbs	CALTRANS
"SOUTH"	8 ft.	2.5	81301013	1	\$329.70	41 lbs	FHWA Standard
"STOP"	8 ft.	2.5	8130104	1	\$240.00	34 lbs	FHWA Standard
"WEST"	8 ft.	2.5	8130125	1	\$250.50	34 lbs	FHWA Standard
"XING"	8 ft.	2.5	8130107	1	\$252.70	33 lbs	FHWA Standard
"XING" YELLOW	8 ft.	2.5	8130107Y	1	\$258.60	33 lbs	CALTRANS
"YIELD"	8 ft.	2.5	8130127	1	\$262.60	41 lbs	FHWA Standard
"NO PARKING"	12"	.30	89180135HS	1	\$123.90		White* - Series B
"FIRE LANE"	12"	.30	89180121HS	1	\$109.40		White* - Series B

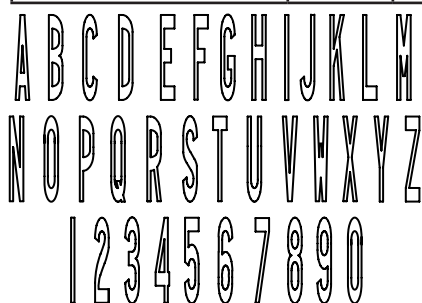


Example illustrations not drawn to scale

The above dimensions are nominal sizes; package inserts include detailed dimensions and letter spacing.

\* Also available in red and yellow.

PreMark® Letters and Numbers						
DESCRIPTION	Size Imperial	Size Meters	Item Number	Quantity Per Pack	Unit Price	Remarks
Individual Letters or Numbers	4 ft.	1.25	8150002-(# or ltr)	1	\$ 54.70	FHWA Standard - 125 mil
Individual Letters or Numbers	8 ft.	2.5	8130002-(# or ltr)	1	\$ 69.30	FHWA Standard - 125 mil
Individual Letters or Numbers	10 ft.	3	8120002-(# or ltr)	1	\$ 87.50	FHWA Standard - 125 mil
Individual Letters or Numbers	6 in.	.15	89190002HS-(# or ltr)	1	\$ 11.35	Series B - 90 mil ViziGrip
Individual Letters or Numbers	12 in.	.30	89180102HS-(# or ltr)	1	\$ 14.30	Series B - 90 mil ViziGrip
Individual Letters or Numbers	24 in.	.61	89160002HS-(# or ltr)	1	\$ 31.60	Series B - 90 mil ViziGrip



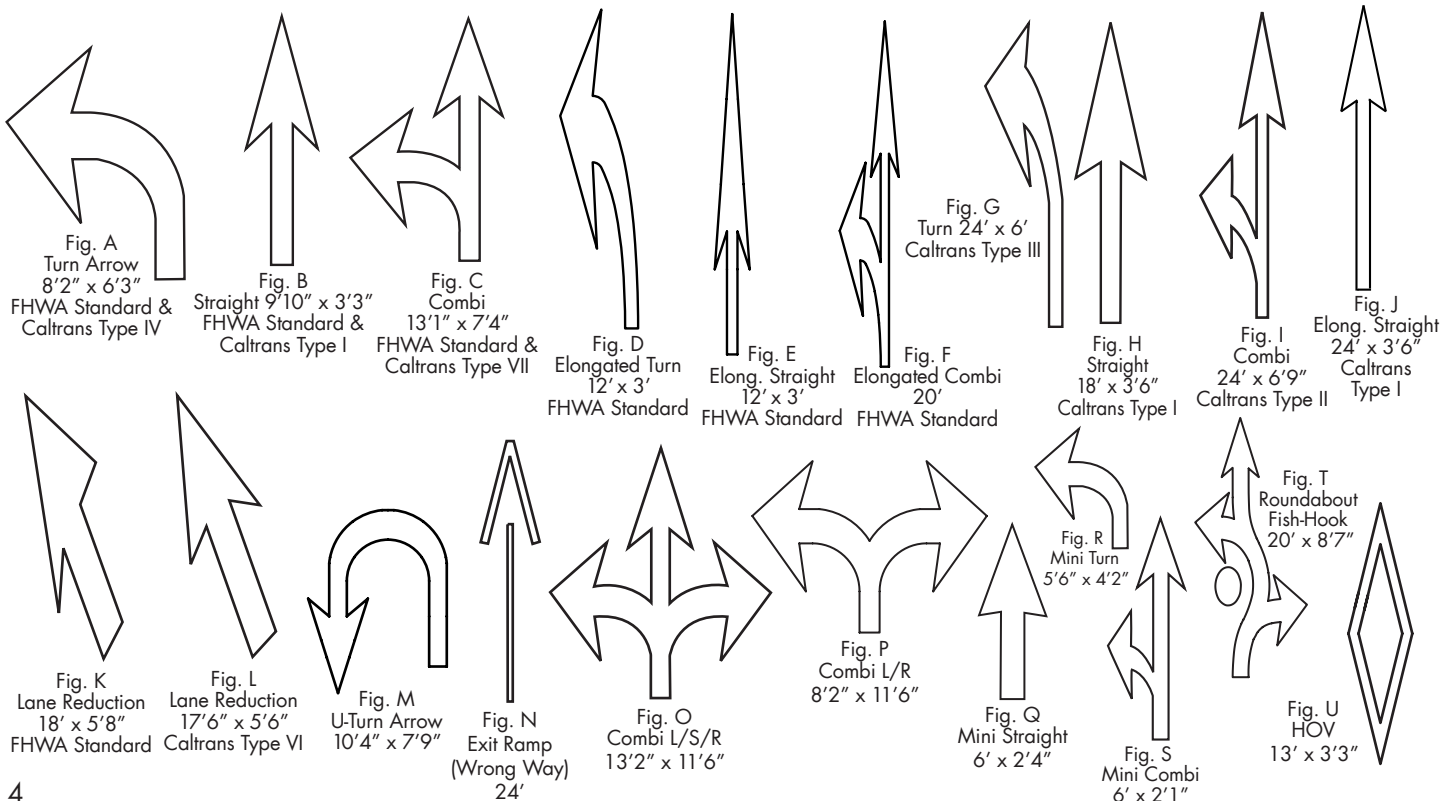
FHWA Letters/Numbers; Complies with MUTCD



FHWA Series B Letters/Numbers

Fig	DESCRIPTION	Size Imp (l x w)**	Size Mtrs (l x w)	Item Number	Qty Per Pack	Price Per Pack	Weight Per Pack	Remarks
A	Turn Arrow Standard Rev*	8'2" x 6'3"	2.5 x 1.9	8330241NB	2	\$338.10	54 lbs	FHWA Std / Caltrans Type IV
A	Turn Arrow Standard Left	8'2" x 6'3"	2.5 x 1.9	8330241L	2	\$338.10	54 lbs	FHWA Std / Caltrans Type IV
A	Turn Arrow Standard Right	8'2" x 6'3"	2.5 x 1.9	8330241R	2	\$338.10	54 lbs	FHWA Std / Caltrans Type IV
B	Straight Arrow Standard	9'10" x 3'3"	3 x 1	8330240	2	\$291.50	34 lbs	FHWA Std / Caltrans Type I
C	Combi Arrow Standard Rev*	13'1" x 7'4"	4 x 2.24	8330142NB	1	\$305.80	38 lbs	FHWA Std / Caltrans Type VII
C	Combi Arrow Standard Left	13'1" x 7'4"	4 x 2.24	8330142L	1	\$305.80	38 lbs	FHWA Std / Caltrans Type VII
C	Combi Arrow Standard Right	13'1" x 7'4"	4 x 2.24	8330142R	1	\$305.80	38 lbs	FHWA Std / Caltrans Type VII
D	Turn Arrow Elongated Rev*	12' x 3'	3.66 x .91	8330247NB	2	\$339.00	26 lbs	FHWA Standard
D	Turn Arrow Elongated Left	12' x 3'	3.66 x .91	8330247L	2	\$339.00	26 lbs	FHWA Standard
D	Turn Arrow Elongated Right	12' x 3'	3.66 x .91	8330247R	2	\$339.00	26 lbs	FHWA Standard
E	Straight Arrow Elongated	12' x 1'8"	3.66 x .51	8330248	2	\$294.30	14 lbs	FHWA Standard
F	Combi Arrow Elongated Rev*	20' x 3'7"	6.1 x 1.09	8330149NB	1	\$297.40	19 lbs	FHWA Standard
F	Combi Arrow Elongated Left	20' x 3'7"	6.1 x 1.09	8330149L	1	\$297.40	19 lbs	FHWA Standard
F	Combi Arrow Elongated Right	20' x 3'7"	6.1 x 1.09	8330149R	1	\$297.40	19 lbs	FHWA Standard
G	Turn Arrow Rev.* - Caltrans	24' x 6'	7.32 x 1.83	8330150NB	1	\$446.80	55 lbs	Caltrans Type III (Calif.)
H	Straight Arrow - Caltrans	18' x 3'6"	5.49 x 1.07	8330251	2	\$557.20	63 lbs	Caltrans Type I (Calif.)
I	Combi Arrow Rev* - Caltrans	24' x 6'9"	7.32 x 2.06	8330152NB	1	\$473.90	67 lbs	Caltrans Type II (Calif.)
J	Straight Arrow Elong - Caltrans	24' x 3'6"	7.32 x 1.07	8330159	1	\$352.70	66 lbs	Caltrans Type I (Calif.)
K	Lane Reduction Arrow Rev*	18' x 5'8"	5.49 x 1.73	8330155NB	1	\$436.20	47 lbs	FHWA Standard
L	Lane Reduction Arrow Rev.*	17'6" x 5'6"	5.64 x 2	8330157NB	1	\$436.20	47 lbs	Caltrans Type VI (Calif.)
M	U-Turn Arrow Left	10'4" x 7'9"	3.15 x 2.36	8330143L	1	\$322.50	39 lbs	
N	Exit Ramp (Wrong Way) Arrow	24'	7.32	8330252	2	\$331.00	63 lbs	FHWA Standard
O	Combi Left/Straight/Right Arrow	13'2" x 11'6"	4.01 x 3.50	8330144	1	\$375.00	53 lbs.	
P	Combi Left/Right Arrow	8'2" x 11'6"	2.5 x 3.50	8330182	1	\$312.50	45 lbs.	
Q	Mini Straight Arrow	6' x 2'4"	1.8 x .69	89330268	2	\$130.50	24 lbs	FHWA Standard (90 mil)
R	Mini Turn Arrow	5'6" x 4'2"	1.67 x 1.27	89330274(+)	2	\$157.30	24 lbs	90 mil
S	Mini Combi Arrow	6' x 2'1"	1.8	89330259(+)	2	\$239.00	10 lbs	90 mil
T	Roundabout Fish-hook Arrow	20' x 8'7"	6.1 x 2.62	PM602004	1	\$445.80	50 lbs	FHWA Standard 2009 MUTCD
U	HOV Designated Lane	13' x 3'3"	3.99 x .99	PM600339	5	\$393.1 0	75 lbs.	FHWA Standard

\* Reversible items do not have surface glass beads. \*\* Overall dimensions shown. Package inserts include detailed dimensions. Example illustrations not drawn to scale



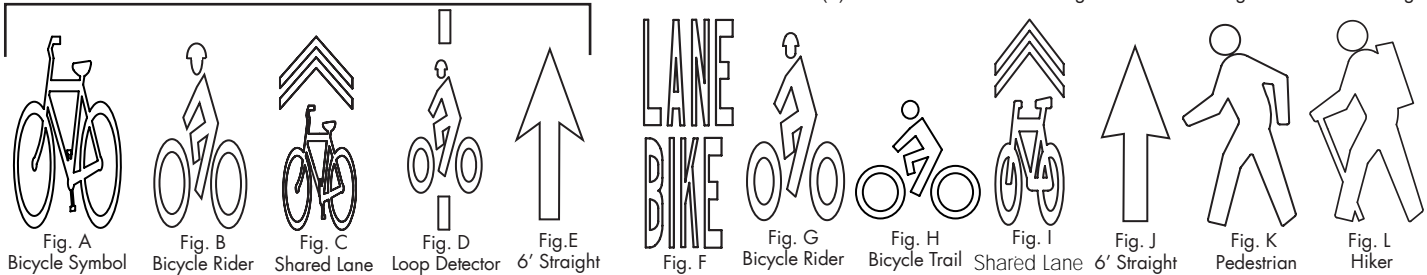
# PreMark® Bike Lane / Pedestrian Markings with ViziGrip

**90 MIL**

Fig	Description	Size	Meters	Pack Qty	Item Number	Pack Price	Pack Wt.	Remarks
A	Bicycle Symbol	6' x 3'4"	1.8 x 1	5	89230576(+) HS	<b>\$830.00</b>	35 lbs	FHWA Standard 2009 MUTCD
B	Bicycle Rider	6' x 3'4"	1.8 x 1	5	PM602006	<b>\$762.80</b>	35 lbs	FHWA Standard 2009 MUTCD
C	Shared Lane Symbol	9'4" x 3'4"	2.82 x .99	2	PM600833(+)	<b>\$392.20</b>	35 lbs	FHWA Standard 2009 MUTCD
D	Bicycle Loop Detector	3'7" x 12"	1.09 x .30	5	89230577(+) HS	<b>\$454.50</b>	22 lbs	FHWA Standard 2009 MUTCD
E	Bike Lane Straight Arrow	6' x 2'	1.8	2	PM602005	<b>\$130.50</b>	24 lbs	FHWA Standard 2009 MUTCD
F	"BIKE"	4'	1.25	2	89150248HS	<b>\$331.90</b>	20 lbs	FHWA Standard
F	"LANE"	4'	1.25	2	89150213HS	<b>\$331.90</b>	20 lbs	FHWA Standard
G	Bicycle Rider	8' x 4'	2.5 x 1.25	2	89230223(+) HS	<b>\$361.00</b>	30 lbs	
G	Bicycle Rider	6'6" x 3'4"	2 x 1	5	89230524(+) HS	<b>\$762.80</b>	35 lbs	FHWA Standard - 2004 SHS Book
G	Bicycle Rider	4' x 2'	1.25 x .62	5	89230525(+) HS	<b>\$523.20</b>	25 lbs	
H	Bicycle Trail	4' x 4'	1.25 x 1.25	5	89230522(+) HS	<b>\$525.10</b>	20 lbs	
I	Shared Lane Symbol	9'3" x 3'3"	2.82 x .99	2	892302464HS	<b>\$392.20</b>	35 lbs	
N/A	Bicycle Loop Detector	5'5"	1.65	5	89230552HS	<b>\$449.90</b>	22 lbs	Caltrans (Calif.)
N/A	"ONLY"	4'	1.25	2	89150202HS	<b>\$331.90</b>	20 lbs	FHWA Standard
N/A	"PED"	4'	1.25	2	89150214HS	<b>\$281.00</b>	16 lbs	FHWA Standard
N/A	"STOP"	4'	1.25	2	89150204HS	<b>\$331.90</b>	20 lbs	FHWA Standard
N/A	"XING"	4'	1.25	2	89150207HS	<b>\$331.90</b>	19 lbs	FHWA Standard
J	Bike Lane Straight Arrow	6' x 2'4"	1.8 x .69	2	89330268HS	<b>\$130.50</b>	24 lbs	
K	Pedestrian Symbol	8'	2.5	2	8230226HS	<b>\$311.30</b>	36 lbs	125 mil
L	Trail Hiker Symbol	4'	2.5	1	89230123HS	<b>\$102.50</b>	8 lbs	also available in 8 ft.

As shown in 2009 MUTCD

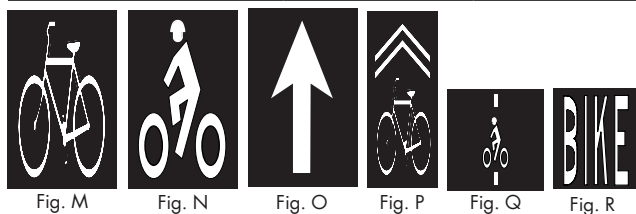
(+) add "L" for Left or "R" for Right to indicate facing direction of marking



# PreMark® Bike Contrast Panels/Bike Boxes (Requires PreMark SP Sealer)

**90 MIL**

Fig	Description	Background Color	Size	Item Number	Qty / Pack	Price / Pack	Remarks
M	Bicycle Symbol	Black	4'w x 7'h	PM600723(+)	1	<b>\$228.20</b>	FHWA Standard
M	Bicycle Symbol	Light Green	4'w x 7'h	PM600723(+)-LG	1	<b>\$228.20</b>	*Requires waiver
N	Bicycle Rider	Black	4'w x 7'h	PM600847(+)-BK	1	<b>\$228.20</b>	FHWA Standard
N	Bicycle Rider	Light Green	4'w x 7'h	PM600847(+)	1	<b>\$228.20</b>	*Requires waiver
O	Straight Arrow	Black	4'w x 7'h	PM600728-BK	1	<b>\$228.20</b>	FHWA Standard
O	Straight Arrow	Light Green	4'w x 7'h	PM600727LG	1	<b>\$228.20</b>	*Requires waiver
P	Shared Lane Symbol	Black	4'w x 10'h	PM600722L	1	<b>\$326.20</b>	FHWA Standard
P	Shared Lane Symbol	Light Green	4'w x 10'h	PM600956(+)	1	<b>\$326.20</b>	*Requires waiver
Q	Bike Loop Detector	Black	4'w x 4'h	PM600729(+)-BK	1	<b>\$130.40</b>	FHWA Standard
Q	Bike Loop Detector	Light Green	4'w x 4'h	PM600729(+)-LG	1	<b>\$130.40</b>	*Requires waiver
R	BIKE Legend	Black	4'w x 5'h	PM600732	1	<b>\$207.40</b>	FHWA Standard
	LANE Legend	Black	4'w x 5'h	PM600730	1	<b>\$207.40</b>	FHWA Standard
	ONLY Legend	Black	4'w x 5'h	PM600731	1	<b>\$207.40</b>	FHWA Standard
S	Bicycle Rider Panel	Light Green	4'w x 20'h	PM600733	1	<b>\$652.10</b>	*Requires waiver
T	Bicycle Symbol Panel	Light Green	4'w x 20'h	PM600734	1	<b>\$652.10</b>	*Requires waiver
	24" Linear 90 mil	Light Green	24" w x 36" h	PM600445	30 sq ft	<b>\$170.10</b>	90 mil - ViziGrip



\* FHWA approval required to experiment with colored bike lanes. See back cover Section 1A.10 for details.

## PreMark® Contrast Markings Lines and Legends

125 MIL

DESCRIPTION	Size Imperial	Size Meters	Border Width	Item Number	Linear Ft. / Qty. Per Pack	Price Per Pack	Weight Per Pack
Lines - White with border	4" x 3'	.10 x .91	1.5"	8431560CONT	45 ft /13.72m	\$148.30	35 lbs
Lines - Yellow with border	4" x 3'	.10 x .91	1.5"	8431560YCONT	45 ft /13.72m	\$152.60	35 lbs
Lines - White with border	5" x 3'	.12 x .91	1.5"	8431572CONT	45 ft /13.72m	\$169.80	39 lbs
Lines - Yellow with border	5" x 3'	.12 x .91	1.5"	8431572YCONT	45 ft /13.72m	\$174.50	39 lbs
Lines - White with border	6" x 3'	.15 x .91	1.5"	8431061CONT	30 ft /9.14m	\$127.20	31 lbs
Lines - Yellow with border	6" x 3'	.15 x .91	1.5"	8431061YCONT	30 ft /9.14m	\$130.70	31 lbs
Lines - White with border	8" x 3'	.20 x .91	3"	8431062CONT	30 ft /9.14m	\$197.70	47 lbs
Lines - Yellow with border	8" x 3'	.20 x .91	3"	8431062YCONT	30 ft /9.14m	\$203.50	47 lbs
AHEAD - White with border	8'	2.5	1.5"	8130106CONT	1	\$356.80	60 lbs
ONLY - White with border	8'	2.5	1.5"	8130102CONT	1	\$267.10	47 lbs
SCHOOL - White with border	8'	2.5	1.5"	8110101CONT	1	\$420.50	70 lbs
SCHOOL - Yellow with border	8'	2.5	1.5"	8110101YCONT	1	\$433.30	70 lbs
SCHOOL - White with border	10'	3	1.5"	8120100CONT	1	\$613.10	85 lbs
XING - White with border	8'	2.5	1.5"	8130107CONT	1	\$262.90	46.5 lbs
XING - Yellow with border	8'	2.5	1.5"	8130107YCONT	1	\$270.30	46.5 lbs
STOP - White with border	8'	2.5	1.5"	8130104CONT	1	\$273.70	47.5 lbs

For lines wider than 8", use white and black linear PreMark® material.

## PreMark® Contrast Markings - Arrows

125 MIL

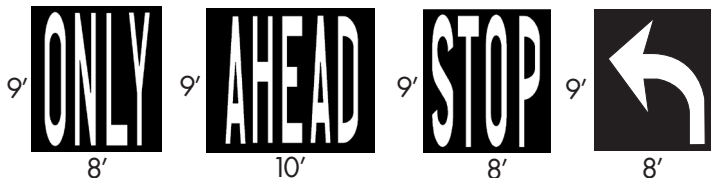
DESCRIPTION	Size Imperial	Size Meters	Border Width	Item Number	Qty. Per Pack	Price Per Pack	Weight Per Pack
Turn Arrow Left	8'2" x 6'3"	2.5 x 1.9	4"	PM300100LCONT	1	\$203.50	42 lbs
Turn Arrow Right	8'2" x 6'3"	2.5 x 1.9	4"	PM300100RCONT	1	\$203.50	42 lbs
Combi Arrow Standard Left	13'1" x 7'4"	4 x 2.24	4"	PM300300LCONT	1	\$410.20	53 lbs
Combi Arrow Standard Right	13'1" x 7'4"	4 x 2.24	4"	PM300300RCONT	1	\$410.20	53 lbs
Straight Arrow	9'10" x 3'3"	3 x 1	4"	PM300110CONT	1	\$221.50	29 lbs

## PreMark® Block Contrast Markings (Requires PreMark® SP Sealer)

125 MIL

DESCRIPTION	Size Imperial	Size Meters	Item Number	Qty.	Price Per Each	Weight Per Pack
8' ONLY w/ Block Contrast	8' x 9'	2.5 x 2.7	PM600700	1	\$461.10	40-50 lbs
8' AHEAD w/ Block Contrast	10' x 9'	3 x 2.7	PM600701	1	\$576.60	40-50 lbs
8' STOP w/ Block Contrast	8' x 9'	2.5 x 2.7	PM600705	1	\$461.10	40-50 lbs
8' Turn Arrow w/Block Contrast	8' x 9'	2.5 x 2.7	PM600702-L	1	\$461.10	40-50 lbs

PreMark  
Specialty  
Items



PreMark  
Specialty  
Items

## PreMark® Interstate Shields / US Shields (Requires PreMark® SP Sealer)

125 MIL

DESCRIPTION	Size Imperial	Size Meters	Item Number	Qty. Per Pack	Price Per Pack	Weight Per Pack	Remarks
Interstate Shield (Red/White/Blue)	4' x 10'	1.22 x 3.05	8230100410IS-#	1	\$ 501.40	45-50 lbs	
Interstate Shield (Red/White/Blue)	6' x 15'	1.82 x 4.55	8230100615IS-#	1	\$ 986.90	45-50 lbs	FHWA Std
Interstate Shield (Red/White/Blue)	7' x 15'	2.13 x 4.55	8230100715IS-#	1	\$1131.10	45-50 lbs	
Interstate Shield (Red/White/Blue)	8' x 20'	2.44 x 6.10	8230100820IS-#	1	\$1666.30	45-50 lbs	FHWA Std
Interstate Shield (Red/White/Blue)	8' x 36'	2.44 x 10.92	8230100836IS-#	1	\$2615.00	45-50 lbs	
US Shield (Black/White)	4' x 10'	1.22 x 3.05	82300100410US-#	1	\$ 466.40	45-50 lbs	
US Shield (Black/White)	6' x 15'	1.82 x 4.55	8230100615US-#	1	\$ 795.00	45-50 lbs	
US Shield (Black/White)	7' x 15'	2.13 x 4.55	8230100715US-#	1	\$ 927.50	45-50 lbs	

## PreMark® Storm Drain Markings with ViziGrip®

**90 MIL**

**NO DUMPING**



DESCRIPTION	Size	Meters	Item Number	Pack Qty	Price/Pack	Weight/Pack	Remarks
"NO DUMPING..." Blue/White	29" x 5"	.73 x .12	call - based on wording	15	<b>\$328.50</b>	30 lbs	Clean Water Act
"NO DUMPING..." Blue/White	12" x 12"	.30 x .30	call - based on wording	15	<b>\$328.50</b>	30 lbs	Clean Water Act



29" x 5"  
Options: Drains to...  
River, Creek, Bay, Ocean, Stream, etc.

## PreMark® Rumble Bar Kit (includes non-beaded bases + bars for proper application)

DESCRIPTION	Size Base	Size Bars	Item Number	Linear Ft. / Pack	Price / Pack	Weight / Pack	Remarks
Single RB Kit - White (12 bases + 12 bars)	4" x 3' base	2" x 3' bar	PM602002	36 ft	<b>\$145.00</b>	39 lbs	250 mil bar
Double RB Kit - White (6 bases + 12 bars)	8" x 3' base	2" x 3' bar	PM602003	18 ft	<b>\$143.80</b>	37 lbs	250 mil bar
Single Rumble Bar Kit - Black (12 bases + 12 bars)	4" x 3' base	2" x 3' bar	PM602002BK	36 ft	<b>\$148.40</b>	39 lbs	250 mil bar
Double Rumble Bar Kit - Black (6 bases + 12 bars)	8" x 3' base	2" x 3' bar	PM602003BK	18 ft	<b>\$147.15</b>	37 lbs	250 mil bar
Single Rumble Bar Kit - Yellow (12 bases + 12 bars)	4" x 3' base	2" x 3' bar	PM602002Y	36 ft	<b>\$148.40</b>	39 lbs	250 mil bar
Double Rumble Bar Kit - Yellow (6 bases + 12 bars)	8" x 3' base	2" x 3' bar	PM602003Y	18 ft	<b>\$147.15</b>	37 lbs	250 mil bar
Single RB Kit - Black Base/White Bar (12 bases + 12 bars)	4" x 3' base	2" x 3' bar	PM602009	36 ft	<b>\$146.70</b>	39 lbs	250 mil bar
Double RB Kit - Black Base/White Bar (6 bases + 12 bars)	8" x 3' base	2" x 3' bar	PM602010	18 ft	<b>\$145.50</b>	37 lbs	250 mil bar

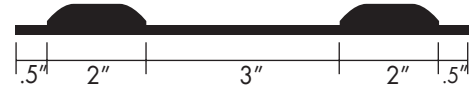
### Single Rumble Bar Kit

125 mil 4" base / 250 mil 2" bar



### Double Rumble Bar Kit

125 mil 8" base / 250 mil 2" bar



## PreMark® Manhole Protection Rings (Available in Black or Grey)

**125 MIL**

DESCRIPTION	Size Imperial	Size Meters	Item Number	Qty Per Pack	Price Per Pack	Weight Per Pack	Remarks
Manhole Kit 8" I.D. Black	8" I.D.	.20 I.D.	8230252BKNB	2	<b>\$126.40</b>	15 lbs	125mil / ring
Manhole Kit 10" I.D. Black	10" I.D.	.25 I.D.	8230240BKNB	2	<b>\$143.75</b>	17 lbs	125 mil / ring
Manhole Kit 24" I.D. Black	24" I.D.	.61 I.D.	8230257BKNB	2	<b>\$190.00</b>	30 lbs	125 mil / ring
Manhole Kit 26" I.D. Black	26" I.D.	.66 I.D.	8230241BKNB	2	<b>\$196.40</b>	35 lbs	125 mil / ring
Manhole Kit 28" I.D. Black	28" I.D.	.71 I.D.	8230248BKNB	2	<b>\$209.60</b>	40 lbs	125 mil / ring
Manhole Kit 32" I.D. Black	32" I.D.	.81 I.D.	8230242BKNB	1	<b>\$119.50</b>	25 lbs	125 mil / ring

Each Manhole Kit consists of 3 rings at 125 mil thickness per ring. Other sizes available.

## PreMark® Blackout Material (Available in Black or Grey)

**125 MIL**

DESCRIPTION	Size Imperial	Size Meters	Item Number	Linear Ft. Per Pack	Price Per Pack	Sq. Ft. Per Pack	Weight Per Pack
Blackout Material	4" x 3'	.10 x .91	8452060BKQ	60ft / 18.28M	<b>\$109.30</b>	20 sq ft	28 lbs
Blackout Material	6" x 3'	.15 x .91	8452061BKQ	60ft / 18.28M	<b>\$156.15</b>	30 sq ft	38 lbs
Blackout Material	12" x 3'	.30 x .91	8451064BKQ	30ft / 9.14M	<b>\$156.15</b>	30 sq ft	38 lbs
Blackout Material	24" x 3'	.61 x .91	8450566BKQ	15ft / 4.57m	<b>\$156.15</b>	30 sq ft	38 lbs

## PreMark® Adhesives

DESCRIPTION	Size Imperial	Size Meters	Item Number	Qty Per Pack	Price Per Pack	Weight Per Pack	Remarks
BUNDY® White	5" x 5"	.12 x .12	8430055	140	<b>\$130.40</b>	38 lbs	RPM Adhesive
BUNDY® Yellow	5" x 5"	.12 x .12	8430055Y	140	<b>\$130.40</b>	38 lbs	RPM Adhesive
BUNDY® Black	5" x 5"	.12 x .12	8430055BK	140	<b>\$130.40</b>	38 lbs	RPM Adhesive
BUNDY® Blue	5" x 5"	.12 x .12	8430055B	140	<b>\$130.40</b>	38 lbs	RPM Adhesive
BUNDY Adhesive/Sealer	13 oz. spray can		621209	1	<b>\$ 12.30</b>	2 lbs	Concrete applications
SUPER BUNDY® Pad	8" x 8"	.20 x .20	8434056	80	<b>\$196.85</b>	40 lbs	100 mil each - use 2
SUPER BUNDY® Strip	2" x 39"	.05 x 1	8434058	80	<b>\$305.60</b>	39 lbs	100 mil each - use 2

## Flint Accessories

DESCRIPTION	Size	Item No.	Quantity	Price	Weight	Remarks
Flint 2000EX® Heat Torch	5" Nozzle	530100	1	<b>\$ 938.20</b>	11 lbs	Cylinder not included
Flint 2000EX Trolley	For 20-40 Cyl.	530108	1	<b>\$ 173.00</b>	40 lbs	Cylinder not included
C-20 LPG Cylinder	20 lb. capacity	530105	1	<b>\$ 53.50</b>	20 lbs	
C-40 LPG Cylinder	40 lb. capacity	530107	1	<b>\$ 101.00</b>	40 lbs	
StreetHeat SR28	24" Heating Width	EQ-SR28	1	<b>\$8500.00</b>		Infrared heater for large volume application
PreMark® Sealer	4 liters (covers 150 sq. ft.)	624206-4	1	<b>\$ 44.10</b>	7 lbs	Use sealer for PreMark® applications on concrete
PreMark® Sealer	20 liters	624206-20	1	<b>\$ 203.60</b>	50 lbs	
PreMark® SP Sealer Kit	Covers 90 sq. ft.	PM8709010	1	<b>\$ 85.00</b>	11 lbs	2 pre-filled sealer cartridges, mixing nozzles, rollers, latex gloves
PreMark® SP Sealer Gun	300/600	4116280	1	<b>\$ 64.00</b>	6 lbs	Sealer not included

# Terms and Conditions of Sale

## Price:

Prices are subject to change without notice. Prices charged will be those in effect at the time of the acceptance of the order.

## Acceptance:

All orders are subject to acceptance by an officer of Flint Trading, Inc.

## Taxes:

The price of the products specified herein excludes any federal, state or local taxes. The Buyer is responsible for any federal, state, or local taxes that apply. The Buyer agrees to reimburse the Seller for any taxes he might ultimately be obligated to pay as a result of this sale which normally would have been collected at the time of sale.

## Payment:

Seller's prices are calculated on a cash-with-order basis. Therefore, all orders are COD unless credit is already established by an acknowledged credit application. Terms on established credit accounts are net on presentation. Balances unpaid after 30 days from date of invoice are subject to a service charge of 1.5% per month or maximum allowed by law, if different, together with expenses incidental to collection, including specifically set forth reasonable attorney's fee of 20% of the unpaid balance.

## Product Changes:

Flint Trading, Inc. is constantly working to improve products. Therefore, in order to incorporate new technological advances, we reserve the right to alter chemical nature, specification, design or weight. Flint Trading, Inc. shall not be required to modify goods already sold or in service.

## Freight Policy:

All product is shipped FOB our warehouse in Thomasville, NC unless otherwise stipulated.

## Claims for Damage or Shortages:

Any claims for shortages must be made within 10 days after the receipt of the merchandise. All products are shipped from our warehouse in Thomasville, NC in good condition and packaged securely. Any shipment which arrives with visible signs of damage or missing packaging should be refused or thoroughly inspected with damage noted on the carrier's delivery ticket. Any claims for goods damaged (visible or concealed) must be made by the Buyer to the delivering carrier within 10 days after receipt of the merchandise.

## Restocking Charges:

No merchandise may be returned for credit without the Seller's prior approval and a Return Merchandise Authorization number, and only with the transportation charges prepaid. A 15% (fifteen percent) restocking charge will be deducted from any credit issued. Returned merchandise will not be accepted after 90 days from the date of delivery.

## ViziGrip®:

ViziGrip® is a unique feature that can be added to PreMark® and is designed to enhance skid resistance and retroreflectivity especially where loss of traction in wet conditions is of major concern. ViziGrip® can be added to any of the PreMark® lines, legends, arrows, and other designs in 90-mil and 125-mil thicknesses. Flint Trading offers PreMark® with ViziGrip® for enhanced skid/slip resistance for road markings for areas with pedestrian and cyclist traffic such as crosswalks, bike paths, as well as parking facilities and other areas using preformed thermoplastic for lines, arrows, accessibility symbols, and word legends.

## Warranties:

Flint Trading, Inc. warrants PreMark® preformed thermoplastic pavement marking products, unless otherwise specified, to the original buyer against material defects for a period of one year from the date of delivery of the goods. Where it appears to the Seller's satisfaction that the defect was present at the time of delivery of the goods, Seller's sole obligation under this warranty is, at its option, to repair the defective product or to provide replacement material. This warranty does not apply to items that have been altered or subjected to misuse or negligence.

Should a product prove to be defective or unsuitable in any way, it is understood that the Seller's limit of liability for all damages, including but not limited to, direct, incidental or consequential injury, loss or damage arising out of the use of or the inability to use the product, shall be to repair the defective product or to provide an equivalent quantity of replacement product.

## Important Notice:

Before using any product from the Manufacturer and Seller, the Buyer shall determine the suitability of the product for his or her intended use and the Buyer assumes all risk and liability whatsoever in connection therewith.

The following excerpts are reprinted from the 2009 Edition of the Manual on Uniform Traffic Control Devices (MUTCD), Chapter 1A.General. To view and access the MUTCD in its entirety, visit <http://mutcd.fhwa.dot.gov/index.htm>.

## Section 1A.02 Principles of Traffic Control Devices

### Support:

This Manual contains the basic principles that govern the design and use of traffic control devices for all streets, highways, bikeways, and private roads open to public travel (see definition in Section 1A.13) regardless of type or class or the public agency, official, or owner having jurisdiction. This Manual's text specifies the restriction on the use of a device if it is intended for limited application or for a specific system. It is important that these principles be given primary consideration in the selection and application of each device.

## Section 1A.07 Responsibility for Traffic Control Devices

### Standard:

The responsibility for the design, placement, operation, maintenance, and uniformity of traffic control devices shall rest with the public agency or the official having jurisdiction, or, in the case of private roads open to public travel, with the private owner or private official having jurisdiction. 23 CFR 655.603 adopts the MUTCD as the national standard for all traffic control devices installed on any street, highway, bikeway, or private road open to public travel (see definition in Section 1A.13). When a State or other Federal agency manual or supplement is required, that manual or supplement shall be in substantial conformance with the National MUTCD.

02 23 CFR 655.603 also states that traffic control devices on all streets, highways, bikeways, and private roads open to public travel in each State shall be in substantial conformance with standards issued or endorsed by the Federal Highway Administrator.

## Section 1A.10 Interpretations, Experimentations, Changes, and Interim Approvals

### Standard:

01 Design, application, and placement of traffic control devices other than those adopted in this Manual shall be prohibited unless the provisions of this Section are followed. Support:

02 Continuing advances in technology will produce changes in the highway, vehicle, and road user proficiency; therefore, portions of the system of traffic control devices in this Manual will require updating. In addition, unique situations often arise for device applications that might require interpretation or clarification of this Manual. It is important to have a procedure for recognizing these developments and for introducing new ideas and modifications into the system.

### Standard:

03 Except as provided in Paragraph 4, requests for any interpretation, permission to experiment, interim approval, or change shall be submitted electronically to the Federal Highway Administration (FHWA), Office of Transportation Operations, MUTCD team, at the following e-mail address: [MUTCDofficialrequest@dot.gov](mailto:MUTCDofficialrequest@dot.gov).

PreMark® has a patented visible indent system, U.S. Patent 5,861,206  
ViziGrip® combines surface beads and abrasives which enhance skid resistance and nighttime visibility, U.S. Patent 6,217,254

**Flint**  
TRADING INC.®

115 Todd Court Thomasville, NC 27360  
Phone: 336-475-6600 Fax: 336-475-7900

Website: [www.flintrading.com](http://www.flintrading.com)  
Email: [sales@flintrading.com](mailto:sales@flintrading.com)